



1. Thoroughly read instructions

2. Set requires 1 team member

3. Tools and hardware required:
None

Assembly	20 Min
Set	30 Min
Total Time	50 Min

**Prior to assembly, review all pieces and determine if any are missing in your kit.
Order any missing or damaged pieces through Go Cart shopping cart.**



1 Beauty Wands Bullnose

Part #: 004-66-5550

Qty: 1



2 Pressed Powder Bullnose

Part #: 004-66-3630

Qty: 1



3 Mascara Bullnose

Part #: 004-66-3627

Qty: 1



4 Lip Liner/Lip Masks Bullnose

Part #: 004-66-5563

Qty: 1



5 Eyeliner/Brow Bullnose

Part #: 004-66-5564

Qty: 1



6 Brow V4 Bullnose

Part #: 004-66-5565

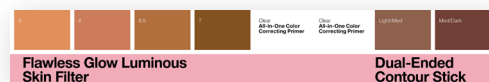
Qty: 1



7 Foundation V3 Bullnose

Part #: 004-66-5566

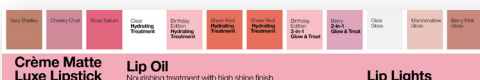
Qty: 1



8 Foundation/Primer/Contour Bullnose

Part #: 004-66-5567

Qty: 1



9 Lipstick/Lip Treatment/Lip Oil/Lip Lights Bullnose

Part #: 004-66-5568

Qty: 1



10 Lip Trio/Lip Plump/Lip Oil Bullnose

Part #: 004-66-5569

Qty: 1

Questions regarding this project should be directed to: myHelp > Signs, Fixtures, Supplies > ISM

Please include: ■ Name of Project and Set Date ■ Part Numbers in question ■ Photo (if applicable)

Missing part of this instruction sheet? To view it electronically, visit:

Workbench > Quick Links > Tools > Instruction Sheets

**Prior to assembly, review all pieces and determine if any are missing in your kit.
Order any missing or damaged pieces through Go Cart shopping cart.**



11 Lip Balm/Lip Treatments/Cheek & Lip Stains Bullnose

Part #: 004-66-5570

Qty: 1



13 Blush/Multiuse Cream Sticks Bullnose

Part #: 004-66-5574

Qty: 1



15 Setting/Toner Bullnose

Part #: 004-66-9455

Qty: 1



17 2ft Glow Shipper A Bullnose

Part #: 004-67-0281

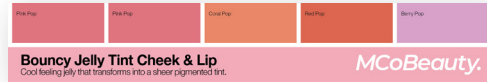
Qty: 1



19 2ft Body Shipper A V2 Bullnose

Part #: 004-67-0283

Qty: 1



12 Cheek & Lip Sticks Bullnose

Part #: 004-66-5571

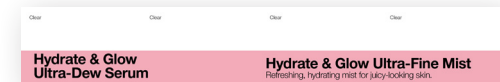
Qty: 1



14 Primer/Setting V2 Bullnose

Part #: 004-66-5575

Qty: 1



16 Serum/Mist Bullnose

Part #: 004-66-9456

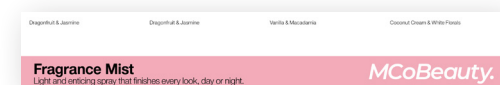
Qty: 1



18 2ft Glow Shipper B Bullnose

Part #: 004-67-0282

Qty: 1



20 2ft Body Shipper B V2 Bullnose

Part #: 004-67-0284

Qty: 1

Questions regarding this project should be directed to: myHelp > Signs, Fixtures, Supplies > ISM

Please include: ■ Name of Project and Set Date ■ Part Numbers in question ■ Photo (if applicable)

Missing part of this instruction sheet? To view it electronically, visit:

Workbench > Quick Links > Tools > Instruction Sheets

**Prior to assembly, review all pieces and determine if any are missing in your kit.
Order any missing or damaged pieces through Go Cart shopping cart.**

MCoBeauty.

21 MCo Branded Bullnose

Part #: 004-67-0273

Qty: 4



23 Face Showcase

Part #: 004-66-9821

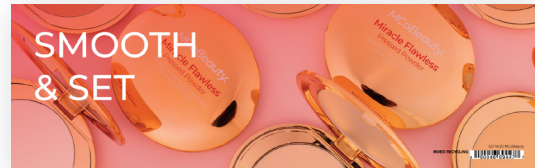
Qty: 1



25 Eyes Showcase

Part #: 004-66-9820

Qty: 1



22 Pressed Powder 12x4 Lit Sign

Part #: 004-66-9447

Qty: 1



24 Lips Showcase

Part #: 004-66-9822

Qty: 1



26 Lip & Cheek Showcase

Part #: 004-66-9823

Qty: 1

Questions regarding this project should be directed to: myHelp > Signs, Fixtures, Supplies > ISM

Please include: ■ Name of Project and Set Date ■ Part Numbers in question ■ Photo (if applicable)

Missing part of this instruction sheet? To view it electronically, visit:

Workbench > Quick Links > Tools > Instruction Sheets

**Prior to assembly, review all pieces and determine if any are missing in your kit.
Order any missing or damaged pieces through Go Cart shopping cart.**

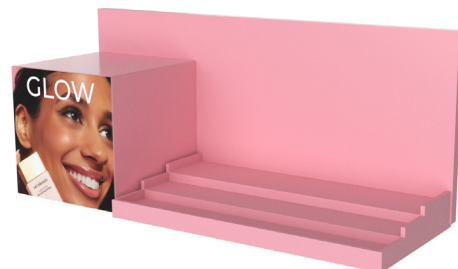
4x84 ONLY



27 2ft Body Shipper - 10in

Part #: 004-66-9815

Qty: 1

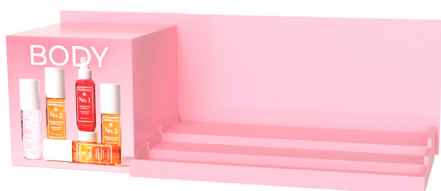


28 2ft Glow Shipper - 10in

Part #: 004-66-9816

Qty: 1

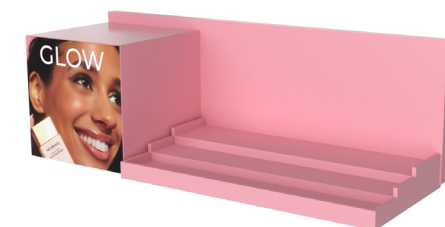
4x72 ONLY



29 2ft Body Shipper - 8in

Part #: 004-67-0050

Qty: 1



30 2ft Glow Shipper - 8in

Part #: 004-67-0051

Qty: 1

Questions regarding this project should be directed to: myHelp > Signs, Fixtures, Supplies > ISM

Please include: ■ Name of Project and Set Date ■ Part Numbers in question ■ Photo (if applicable)

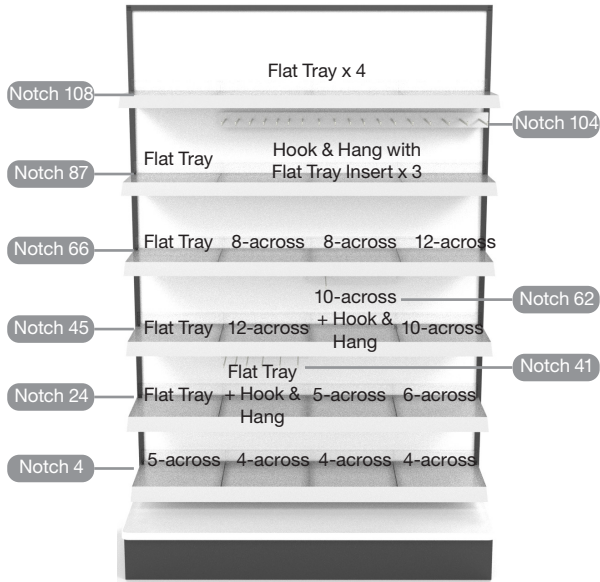
Missing part of this instruction sheet? To view it electronically, visit:

Workbench > Quick Links > Tools > Instruction Sheets

D52 | Beauty | MCoBeauty 4x72 & 4x84

Page 6 of 9

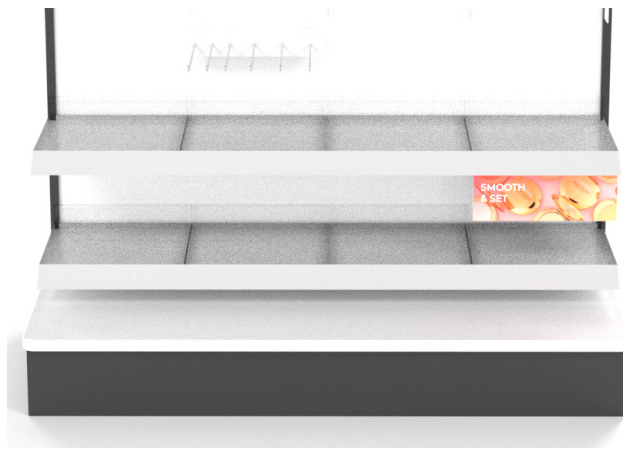
Step 1: Secure new shelves, pusher trays, 12x4 lit sign holder, and Hook & Hang fixtures.



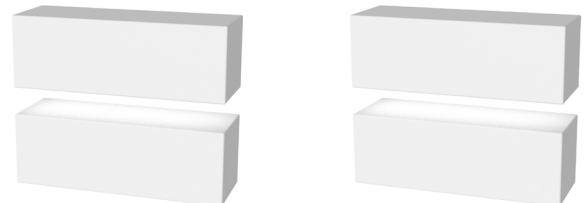
Step 2: Insert Pressed Powder 12x4 lit sign (004-66-9447) into sign holder. Set assembled lit sign aside.



Step 3: Starting from the base deck, set bottom two rows of shelves, hook & hangs and lightbox.



Step 4: Find Lip & Cheek Showcase (004-66-9823) and (4) white filler boxes.



Questions regarding this project should be directed to: myHelp > Signs, Fixtures, Supplies > ISM

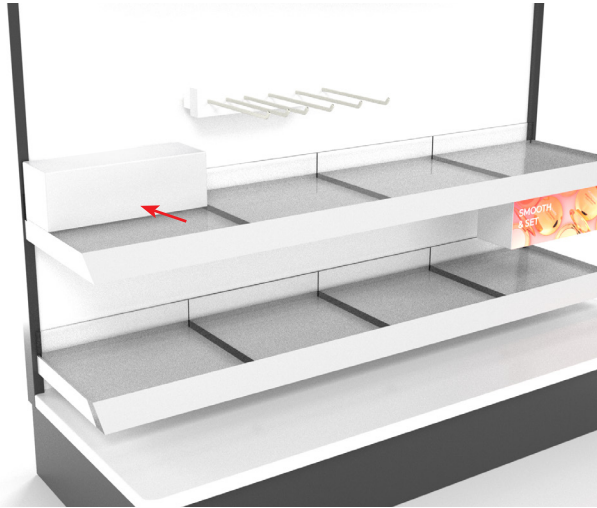
Please include: ■ Name of Project and Set Date ■ Part Numbers in question ■ Photo (if applicable)

Missing part of this instruction sheet? To view it electronically, visit:

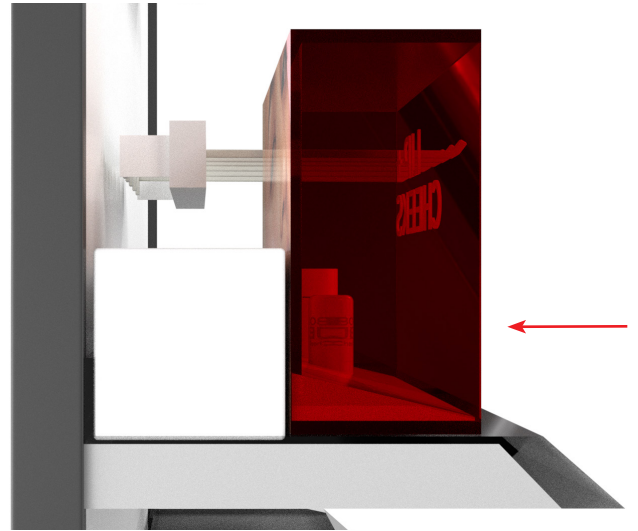
Workbench > Quick Links > Tools > Instruction Sheets

004-66-9813

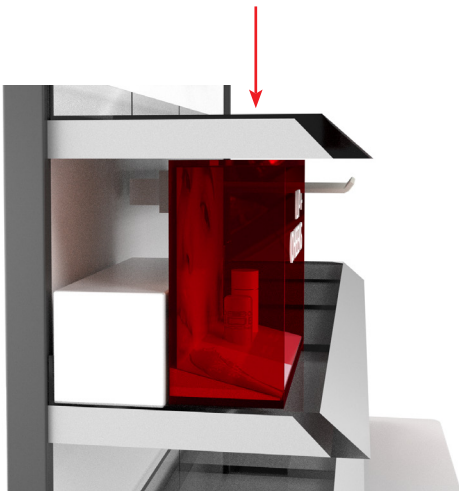
Step 5: Form filler box and place (1) at the back of flat tray shelf, second row up from bottom, left side.



Step 6: Place Lip & Cheek Showcase (004-66-9823) in front of filler box. Showcase should be positioned at the very front of the shelf.



Step 7: Place flat shelf tray into notch 45, directly above Lip & Cheek Showcase. Bottom of shelf should be touching or just slightly above the top of the Lip & Cheek Showcase.



Step 8: Repeat steps 5-7 to set Lips Showcase (004-66-9822) on shelf in notch 45, Face Showcase (004-66-9821) on shelf in notch 66, and Eyes Showcase (004-66-9820) in notch 87.



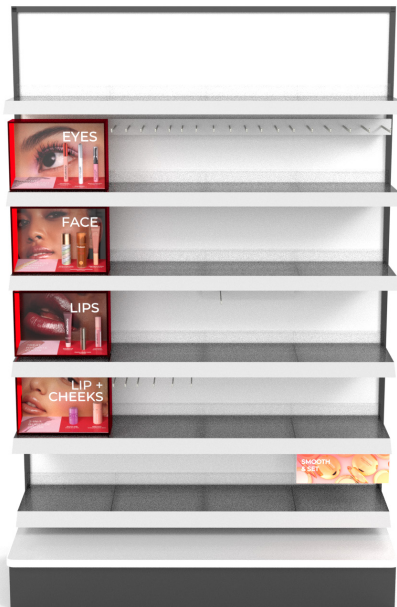
Questions regarding this project should be directed to: myHelp > Signs, Fixtures, Supplies > ISM

Please include: ■ Name of Project and Set Date ■ Part Numbers in question ■ Photo (if applicable)

Missing part of this instruction sheet? To view it electronically, visit:

Workbench > Quick Links > Tools > Instruction Sheets

Step 9: Set all remaining shelves and hook and hang fixtures as shown in step 1.



Step 10: Attach backers to Body Shipper Tray (004-66-9815 or 004-67-0050) and Glow Shipper Tray (004-66-9816 or 004-67-0052).



Step 11: Place Body Shipper Tray (004-66-9815 or 004-67-0050) on top left two shelves.



Step 12: Place Glow Shipper Tray (004-66-9816 or 004-67-0052) on top right two shelves.



Questions regarding this project should be directed to: myHelp > Signs, Fixtures, Supplies > ISM

Please include: ■ Name of Project and Set Date ■ Part Numbers in question ■ Photo (if applicable)

Missing part of this instruction sheet? To view it electronically, visit:

Workbench > Quick Links > Tools > Instruction Sheets

Step 13: Place all bullnoses and product.



Questions regarding this project should be directed to: myHelp > Signs, Fixtures, Supplies > ISM

Please include: ■ Name of Project and Set Date ■ Part Numbers in question ■ Photo (if applicable)

Missing part of this instruction sheet? To view it electronically, visit:

Workbench > Quick Links > Tools > Instruction Sheets