



1. Thoroughly read instructions
2. Set requires **1** team member
3. Tools and hardware required:

None

Assembly	10 Min
Set	25 Min
<b>Total Time</b>	<b>35 Min</b>

**Questions regarding this project should be directed to:** myHelp > Signs, Fixtures, Supplies > ISM

**Please include:** ■ Name of Project and Set Date ■ Part Numbers in question ■ Photo (if applicable)

**Missing part of this instruction sheet? To view it electronically, visit:**

Workbench > Quick Links > Tools > Instruction Sheets



**Prior to assembly, review all pieces and determine if any are missing in your kit.  
Order any missing or damaged pieces through Go Cart shopping cart.**



**11 Primer/Setting Bullnose**

Part #: 004-66-5547

Qty: 1



**13 3ft Body & Glow Shipper A Bullnose**

Part #: 004-67-0276

Qty: 1



**15 3ft Body & Glow Shipper C Bullnose**

Part #: 004-67-0278

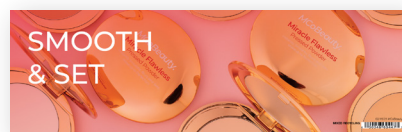
Qty: 1



**17 Lip Lights 4x4 Shelf Saver**

Part #: 004-66-9386

Qty: 1



**18 Pressed Powder Lit Sign 12x4**

Part #: 004-66-9447

Qty: 1



**12 Blush Bullnose**

Part #: 004-66-9389

Qty: 1



**14 3ft Body & Glow Shipper B Bullnose**

Part #: 004-67-0277

Qty: 1



**16 PH Blushes 5x4 Shelf Saver**

Part #: 004-66-9448

Qty: 1



**19 3ft Body & Glow Shipper Tray - 10in**

Part #: 004-66-9818

Qty: 1

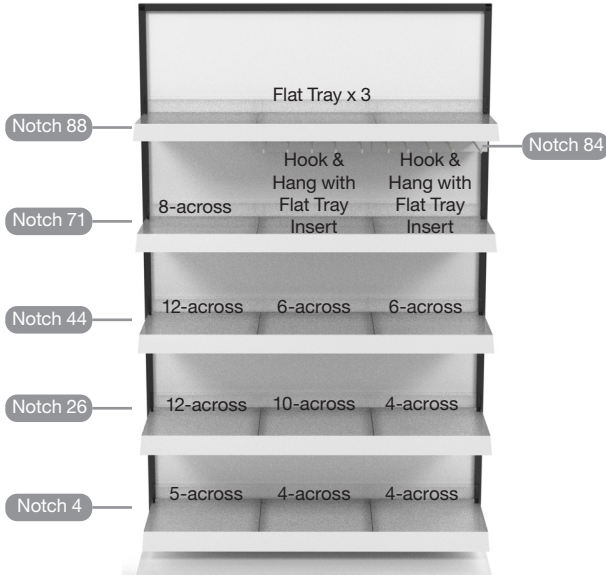
**Questions regarding this project should be directed to:** myHelp > Signs, Fixtures, Supplies > ISM

**Please include:** ■ Name of Project and Set Date ■ Part Numbers in question ■ Photo (if applicable)

**Missing part of this instruction sheet? To view it electronically, visit:**

Workbench > Quick Links > Tools > Instruction Sheets

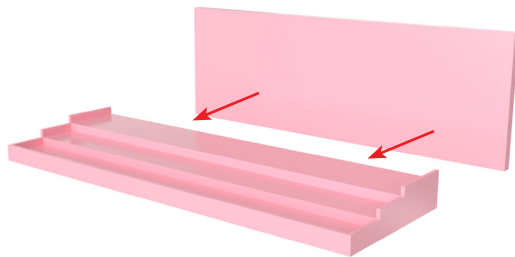
**Step 1:** Secure new shelves, pusher trays, 12x4 lit sign holder, and Hook & Hang fixtures.



**Step 2:** Insert Pressed Powder 12x4 lit sign (004-66-9447) into sign holder. Set assembled lit sign aside.



**Step 3:** Attach Shipper Tray (004-66-9818) backer to back of tiered riser.



**Step 4:** Set top row of shelves and place Shipper Tray (004-66-9818) on top shelf. Backer should align with top of fixture or bottom of store header fixture (if present).



**Questions regarding this project should be directed to:** myHelp > Signs, Fixtures, Supplies > ISM

**Please include:** ■ Name of Project and Set Date ■ Part Numbers in question ■ Photo (if applicable)

**Missing part of this instruction sheet? To view it electronically, visit:**

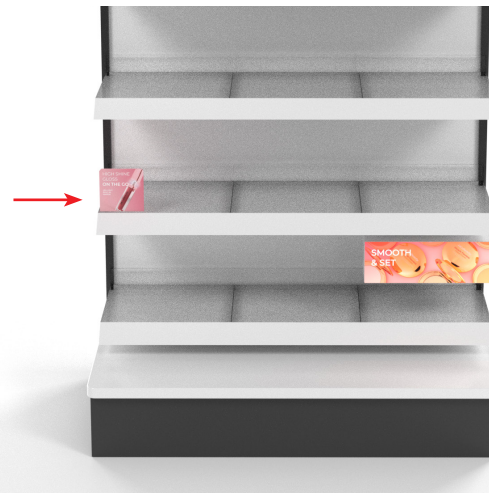
Workbench > Quick Links > Tools > Instruction Sheets



**Step 5:** Set remaining shelves and lightboxes as shown in step 1.



**Step 6:** Set 4x4 Lip Lights Shelf Saver (004-66-9386) on the second shelf up from bottom, left column. Set Shelf Saver on left side of shelf.



**Step 7:** Set 5x4 PH Blush Shelf Saver (004-66-9448) on third shelf up from bottom, right column. Set Shelf Saver on left side of shelf.



**Step 8:** Place all bullnoses and product.



**Questions regarding this project should be directed to:** myHelp > Signs, Fixtures, Supplies > ISM

**Please include:** ■ Name of Project and Set Date ■ Part Numbers in question ■ Photo (if applicable)

**Missing part of this instruction sheet? To view it electronically, visit:**

Workbench > Quick Links > Tools > Instruction Sheets