



1. Thoroughly read instructions
2. Set requires **1** team member
3. Tools and hardware required:

None

Assembly	10 Min
Set	25 Min
Total Time	35 Min

Questions regarding this project should be directed to: myHelp > Signs, Fixtures, Supplies > ISM

Please include: ■ Name of Project and Set Date ■ Part Numbers in question ■ Photo (if applicable)

Missing part of this instruction sheet? To view it electronically, visit:
 Workbench > Quick Links > Tools > Instruction Sheets

**Prior to assembly, review all pieces and determine if any are missing in your kit.
Order any missing or damaged pieces through Go Cart shopping cart.**



1 Lip Gloss Trio/Lip Masks Bullnose

Part #: 004-66-3634

Qty: 1

MCoBeauty.

3 MCo Branded Bullnose

Part #: 004-67-0273

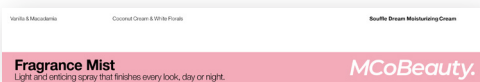
Qty: 2



5 Primer/Setting Bullnose

Part #: 004-66-5547

Qty: 1



7 3ft Body & Glow Shipper B Bullnose

Part #: 004-67-0277

Qty: 1



9 Cheek & Lip Sticks/Blush Bullnose

Part #: 004-66-3633

Qty: 1



2 Serum/Toner/Mist Bullnose

Part #: 004-66-3636

Qty: 1



4 Foundation V2 Bullnose

Part #: 004-66-3637

Qty: 1



6 3ft Body & Glow Shipper A Bullnose

Part #: 004-67-0276

Qty: 1



8 3ft Body & Glow Shipper C Bullnose

Part #: 004-67-0278

Qty: 1



10 Mascara/Brow V2 Bullnose

Part #: 004-66-5548

Qty: 1

Questions regarding this project should be directed to: myHelp > Signs, Fixtures, Supplies > ISM

Please include: ■ Name of Project and Set Date ■ Part Numbers in question ■ Photo (if applicable)

Missing part of this instruction sheet? To view it electronically, visit:

Workbench > Quick Links > Tools > Instruction Sheets

**Prior to assembly, review all pieces and determine if any are missing in your kit.
Order any missing or damaged pieces through Go Cart shopping cart.**



11 Brow V2 Bullnose

Part #: 004-66-5549

Qty: 1



**13 Lip Treatment/Lip Oil/Lip Lights/
Cheek & Lip Stain Bullnose**

Part #: 004-66-5551

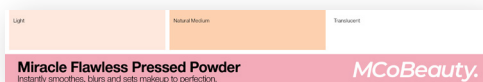
Qty: 1



**15 Contour Sticks/Multiuse Sticks/Lip
Liner Bullnose**

Part #: 004-66-5553

Qty: 1



17 Pressed Powder V2 Bullnose

Part #: 004-66-5555

Qty: 1



12 Beauty Wands Bullnose

Part #: 004-66-5550

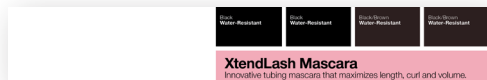
Qty: 1



**14 Lip Treatment/Lip Balm/Lip
Plump/Lipstick Bullnose**

Part #: 004-66-5552

Qty: 1



16 Mascara V3 Bullnose

Part #: 004-66-5554

Qty: 1



18 Mascara 5x4 Shelf Saver Bullnose

Part #: 004-66-9618

Qty: 1

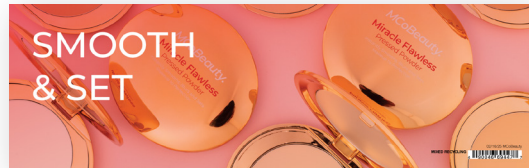
Questions regarding this project should be directed to: myHelp > Signs, Fixtures, Supplies > ISM

Please include: ■ Name of Project and Set Date ■ Part Numbers in question ■ Photo (if applicable)

Missing part of this instruction sheet? To view it electronically, visit:

Workbench > Quick Links > Tools > Instruction Sheets

**Prior to assembly, review all pieces and determine if any are missing in your kit.
Order any missing or damaged pieces through Go Cart shopping cart.**



19 Pressed Powder Lit Sign 12x4

Part #: 004-66-9447

Qty: 1



21 3ft Body & Glow Shipper Tray - 9in

Part #: 004-66-9817

Qty: 1



23 Lips Showcase

Part #: 004-66-9822

Qty: 1



20 Blush Lit Sign 12x4

Part #: 004-67-0534

Qty: 1



22 Face Showcase

Part #: 004-66-9821

Qty: 1

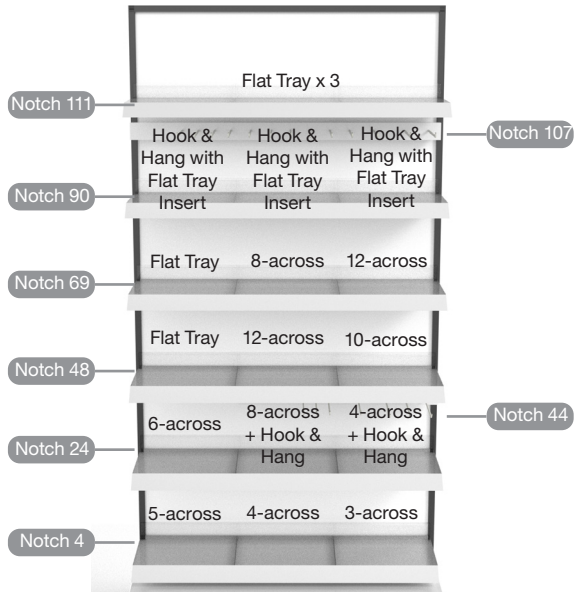
Questions regarding this project should be directed to: myHelp > Signs, Fixtures, Supplies > ISM

Please include: ■ Name of Project and Set Date ■ Part Numbers in question ■ Photo (if applicable)

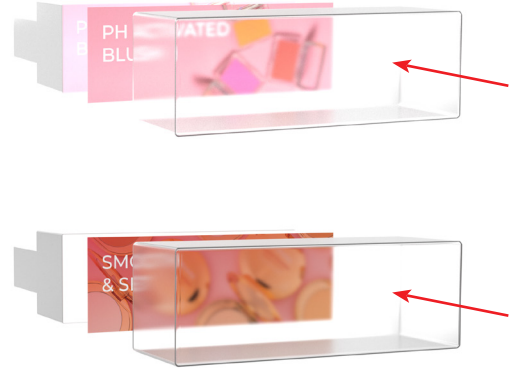
Missing part of this instruction sheet? To view it electronically, visit:

Workbench > Quick Links > Tools > Instruction Sheets

Step 1: Secure new shelves, pusher trays, 12x4 lit sign holders, and Hook & Hang fixtures.



Step 2: Insert Blush 12x4 lit sign (004-67-0534) into sign holder. Repeat for Pressed Powder 12x4 lit sign (004-66-9447). Set both assembled lit signs aside.



Step 3: Starting from the base deck, set bottom three rows of shelves, hook & hangs and lightboxes.

- Blush 12x4 lit sign (004-67-0534) directly below 3rd shelf up from bottom, left column.
- Pressed Powder 12x4 lit sign (004-66-9447) directly below 2nd shelf up from bottom, right column.



Questions regarding this project should be directed to: myHelp > Signs, Fixtures, Supplies > ISM

Please include: ■ Name of Project and Set Date ■ Part Numbers in question ■ Photo (if applicable)

Missing part of this instruction sheet? To view it electronically, visit:

Workbench > Quick Links > Tools > Instruction Sheets

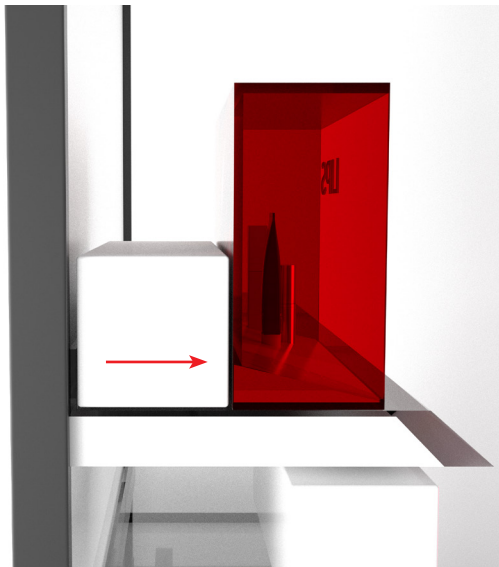
Step 4: Find Lips Showcase (004-66-9822) and (2) white filler boxes.



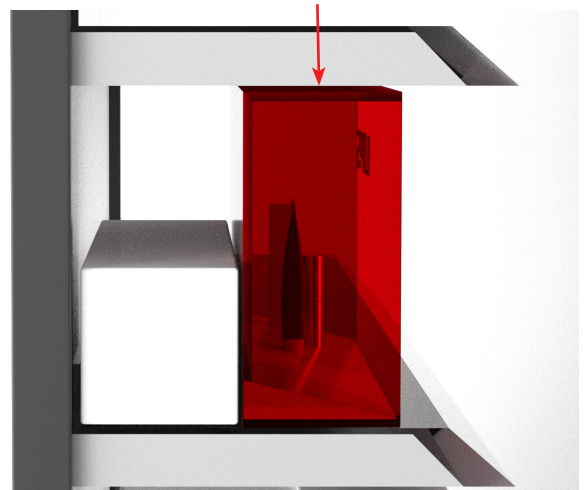
Step 5: Form filler box and place (1) filler box at the back of flat tray shelf, third row up from the bottom, left side.



Step 6: Place Lips Showcase in front of filler box. Showcase should be positioned at the very front of shelf.



Step 7: Place flat tray shelf into notch 45, directly above Lips Showcase (004-66-9822). Bottom of tray above showcase should be touching or just slightly above the top of the Lips Showcase below.



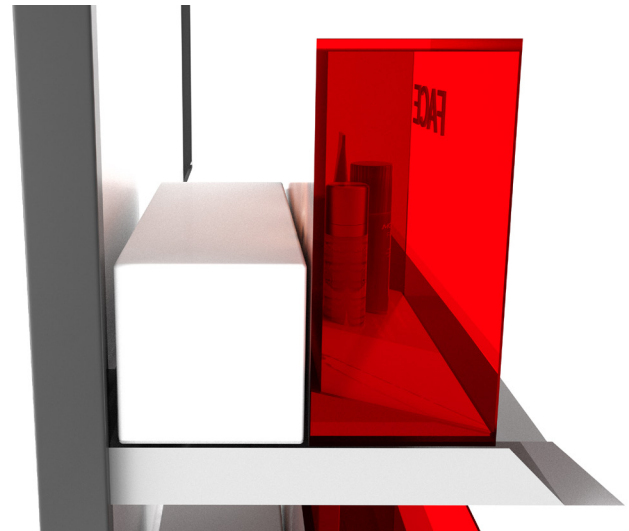
Questions regarding this project should be directed to: myHelp > Signs, Fixtures, Supplies > ISM

Please include: ■ Name of Project and Set Date ■ Part Numbers in question ■ Photo (if applicable)

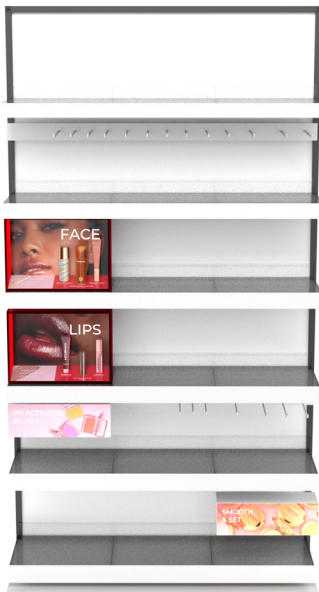
Missing part of this instruction sheet? To view it electronically, visit:

Workbench > Quick Links > Tools > Instruction Sheets

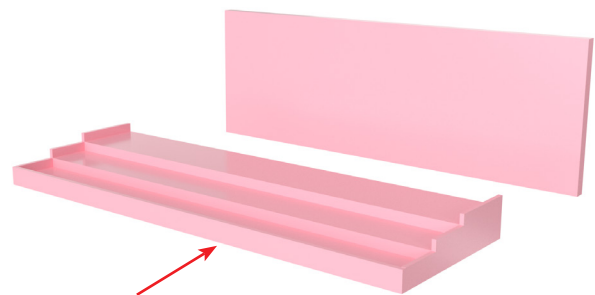
Step 8: Repeat steps 5-7 for Face Showcase (004-66-9821). Form and place second filler box onto the back of the flat tray shelf in notch 69, left side. Set Face Showcase (004-66-9821) at the front of the shelf.



Step 9: Set all remaining shelves, hook & hang fixtures as shown in step 1.



Step 10: Attach Shipper Tray (004-66-9817) backer to back of tiered riser.



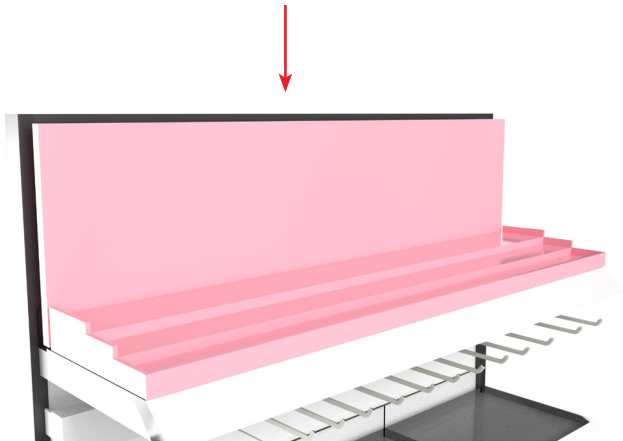
Questions regarding this project should be directed to: myHelp > Signs, Fixtures, Supplies > ISM

Please include: ■ Name of Project and Set Date ■ Part Numbers in question ■ Photo (if applicable)

Missing part of this instruction sheet? To view it electronically, visit:

Workbench > Quick Links > Tools > Instruction Sheets

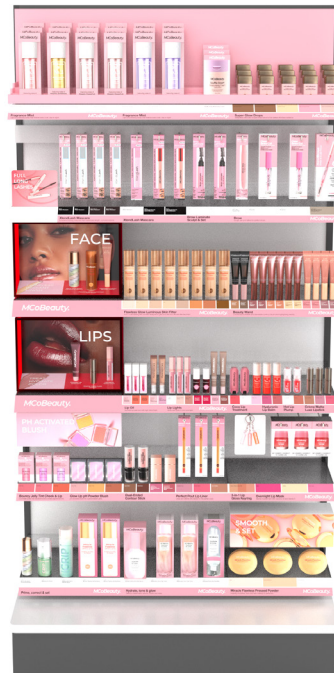
Step 11: Place Shipper Tray (004-66-9817) on top shelf. Backer should align with top of fixture or bottom of store header fixture.



Step 12: Set 5x4 Mascara Shelf Saver (004-66-9618) on second shelf down from top, left column shelf. Set shelf saver on left side of shelf.



Step 13: Place all bullnoses and product.



Questions regarding this project should be directed to: myHelp > Signs, Fixtures, Supplies > ISM

Please include: ■ Name of Project and Set Date ■ Part Numbers in question ■ Photo (if applicable)

Missing part of this instruction sheet? To view it electronically, visit:

Workbench > Quick Links > Tools > Instruction Sheets