



1. Thoroughly read instructions
2. Set requires **1** team member
3. Tools and hardware required:
None

Assembly	20 Min
Set	30 Min
Total Time	50 Min

Questions regarding this project should be directed to: myHelp > Signs, Fixtures, Supplies > ISM

Please include: ■ Name of Project and Set Date ■ Part Numbers in question ■ Photo (if applicable)

Missing part of this instruction sheet? To view it electronically, visit:
 Workbench > Quick Links > Tools > Instruction Sheets

**Prior to assembly, review all pieces and determine if any are missing in your kit.
Order any missing or damaged pieces through Go Cart shopping cart.**



1 Beauty Wands Bullnose

Part #: 004-66-5550

Qty: 1



2 Pressed Powder Bullnose

Part #: 004-66-3630

Qty: 1



3 Lip Liner/Lip Masks Bullnose

Part #: 004-66-5563

Qty: 1



4 Primer/Setting V2 Bullnose

Part #: 004-66-5575

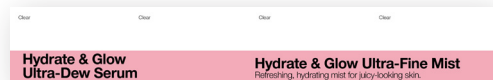
Qty: 1



5 Setting/Toner Bullnose

Part #: 004-66-9455

Qty: 1



6 Serum/Mist Bullnose

Part #: 004-66-9456

Qty: 1



7 2ft Glow Shipper A Bullnose

Part #: 004-67-0281

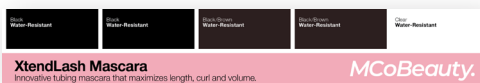
Qty: 1



8 2ft Glow Shipper B Bullnose

Part #: 004-67-0282

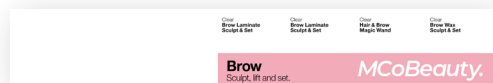
Qty: 1



9 Mascara V2 Bullnose

Part #: 004-66-3638

Qty: 1



10 Brow V3 Bullnose

Part #: 004-66-5556

Qty: 1

Questions regarding this project should be directed to: myHelp > Signs, Fixtures, Supplies > ISM

Please include: ■ Name of Project and Set Date ■ Part Numbers in question ■ Photo (if applicable)

Missing part of this instruction sheet? To view it electronically, visit:

Workbench > Quick Links > Tools > Instruction Sheets

**Prior to assembly, review all pieces and determine if any are missing in your kit.
Order any missing or damaged pieces through Go Cart shopping cart.**



11 Contour/Blush/Multiuse Cream Stick Bullnose

Part #: 004-66-5557

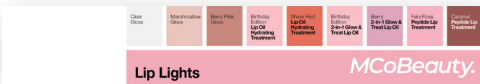
Qty: 1



12 Lip Gloss Trio/Cheek & Lip Sticks Bullnose

Part #: 004-66-5558

Qty: 1



13 Lip Lights/Lip Treatment/Lip Oil V2 Bullnose

Part #: 004-66-5559

Qty: 1



14 Foundation/Primer Bullnose

Part #: 004-66-9396

Qty: 1



15 2ft Body Shipper A Bullnose

Part #: 004-67-0279

Qty: 1



16 2ft Body Shipper B Bullnose

Part #: 004-67-0280

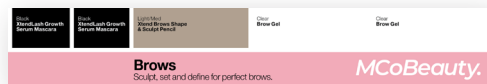
Qty: 1



17 Lip Balm/Lip Treatment/Lipstick/Lip Plump Bullnose

Part #: 004-67-0497

Qty: 1



18 Mascara/Brow V3 Bullnose

Part #: 004-67-0565

Qty: 1

MCoBeauty.

19 MCo Branded Bullnose

Part #: 004-67-0283

Qty: 2

Questions regarding this project should be directed to: myHelp > Signs, Fixtures, Supplies > ISM

Please include: ■ Name of Project and Set Date ■ Part Numbers in question ■ Photo (if applicable)

Missing part of this instruction sheet? To view it electronically, visit:

Workbench > Quick Links > Tools > Instruction Sheets

**Prior to assembly, review all pieces and determine if any are missing in your kit.
Order any missing or damaged pieces through Go Cart shopping cart.**



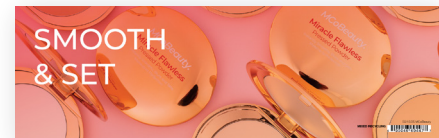
20 5x4 Brow Shelf Saver

Part #: 004-66-9387
Qty: 1



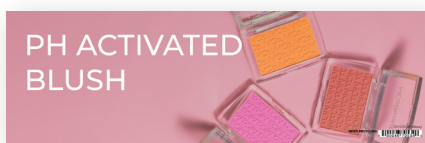
21 3x4 Lip Lights Shelf Saver

Part #: 004-66-9388
Qty: 1



22 Pressed Powder 12x4 Lit Sign

Part #: 004-66-9447
Qty: 1



23 Blush 12x4 Lit Sign

Part #: 004-67-0534
Qty: 1



24 Eyes Showcase

Part #: 004-66-9820
Qty: 1



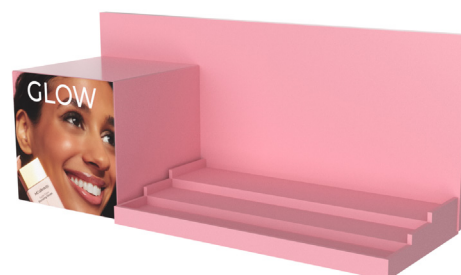
25 Lips Showcase

Part #: 004-66-9822
Qty: 1



26 2ft Body Shipper - 10in

Part #: 004-66-9815
Qty: 1



27 2ft Glow Shipper - 10in

Part #: 004-66-9816
Qty: 1

Questions regarding this project should be directed to: myHelp > Signs, Fixtures, Supplies > ISM

Please include: ■ Name of Project and Set Date ■ Part Numbers in question ■ Photo (if applicable)

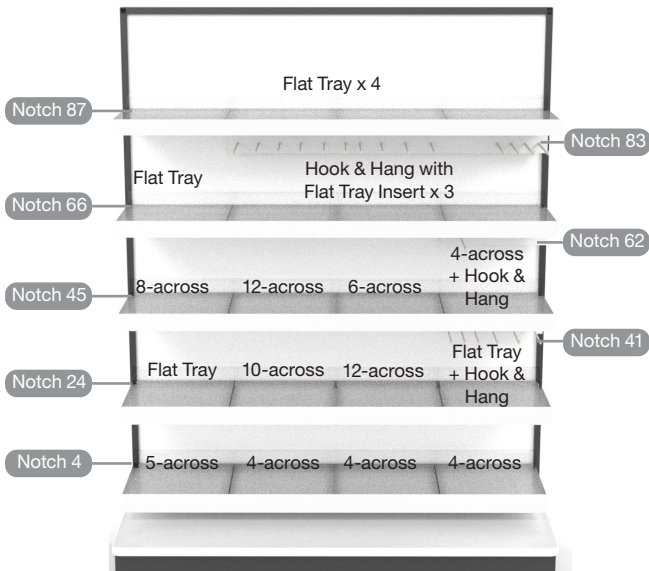
Missing part of this instruction sheet? To view it electronically, visit:

Workbench > Quick Links > Tools > Instruction Sheets

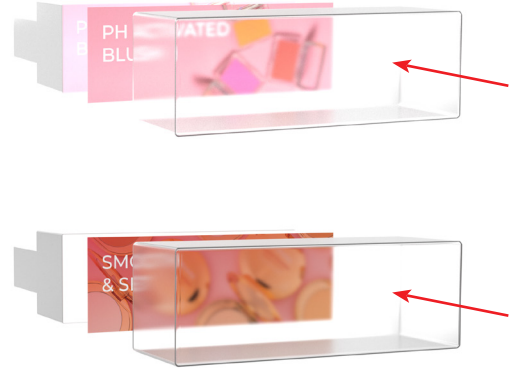
D52 | Beauty | MCoBeauty 4x64 & 4x67

Page 5 of 8

Step 1: Secure new shelves, pusher trays, 12x4 lit sign holders, and Hook & Hang fixtures.



Step 2: Insert Blush 12x4 lit sign (004-67-0534) into sign holder. Repeat for Pressed Powder 12x4 lit sign (004-66-9447). Set both assembled lit signs aside.



Step 3: Starting from the base deck, set bottom two rows of shelves, hook & hangs and lightbox.



Step 4: Find Lips Showcase (004-66-9822) and (2) white filler boxes.



Questions regarding this project should be directed to: myHelp > Signs, Fixtures, Supplies > ISM

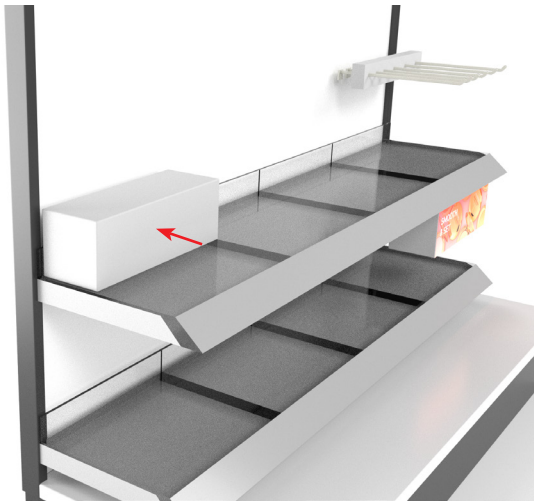
Please include: ■ Name of Project and Set Date ■ Part Numbers in question ■ Photo (if applicable)

Missing part of this instruction sheet? To view it electronically, visit:

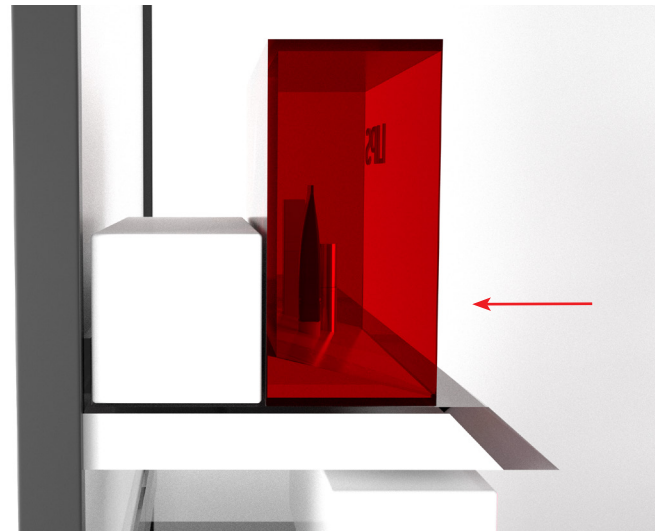
Workbench > Quick Links > Tools > Instruction Sheets

004-66-9812

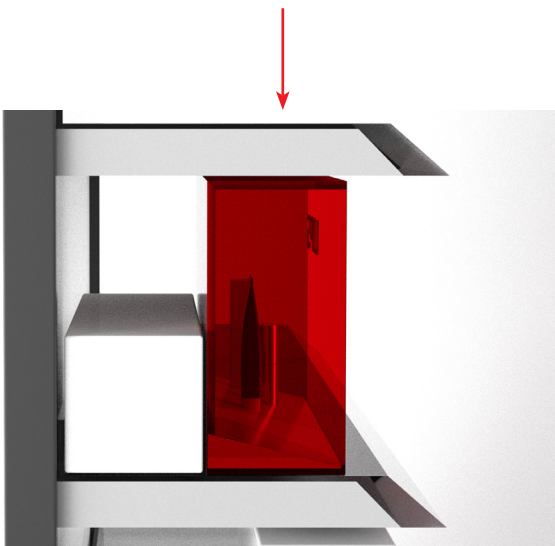
Step 5: Form filler box and place (1) at the back of flat tray shelf, second row up from bottom, left side.



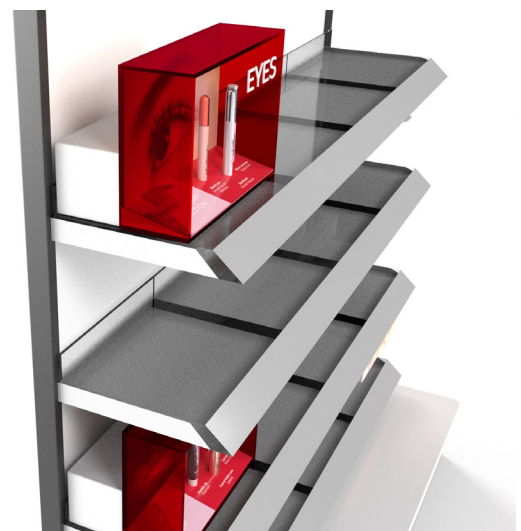
Step 6: Place Lips Showcase (004-66-9822) in front of filler box. Showcase should be positioned at the very front of the shelf.



Step 7: Place 8-across pusher shelf tray into notch 45, directly above Lips Showcase. Bottom of shelf should be touching or just slightly above the top of the Lips Showcase.



Step 8: Repeat steps 5-7 to set Eyes Showcase (004-66-9820) on shelf in notch 66.



Questions regarding this project should be directed to: myHelp > Signs, Fixtures, Supplies > ISM

Please include: ■ Name of Project and Set Date ■ Part Numbers in question ■ Photo (if applicable)

Missing part of this instruction sheet? To view it electronically, visit:

Workbench > Quick Links > Tools > Instruction Sheets

Step 9: Set all remaining shelves, lightboxes and hook and hang fixtures as shown in step 1.



Step 10: Attach backers to Body Shipper Tray (004-66-9815) and Glow Shipper Tray (004-66-9816).



Step 11: Place Body Shipper Tray (004-66-9815) on top left two shelves.



Step 12: Place Glow Shipper Tray (004-66-9816) on top right two shelves.



Questions regarding this project should be directed to: myHelp > Signs, Fixtures, Supplies > ISM

Please include: ■ Name of Project and Set Date ■ Part Numbers in question ■ Photo (if applicable)

Missing part of this instruction sheet? To view it electronically, visit:

Workbench > Quick Links > Tools > Instruction Sheets

Step 13: Place all bullnoses and product.



Questions regarding this project should be directed to: myHelp > Signs, Fixtures, Supplies > ISM

Please include: ■ Name of Project and Set Date ■ Part Numbers in question ■ Photo (if applicable)

Missing part of this instruction sheet? To view it electronically, visit:

Workbench > Quick Links > Tools > Instruction Sheets