

- Thoroughly read instructions
- Set requires 1 team member
- Tools and hardware required:
None

Assembly	10 Min
Set	20 Min
Total Time	30 Min

Questions regarding this project should be directed to: myHelp > Signs, Fixtures, Supplies > ISM

Please include: ■ Name of Project and Set Date ■ Part Numbers in question ■ Photo (if applicable)

Missing part of this instruction sheet? To view it electronically, visit:

Workbench > Quick Links > Tools > Instruction Sheets

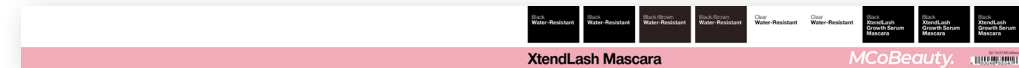
**Prior to assembly, review all pieces and determine if any are missing in your kit.
Order any missing or damaged pieces through Go Cart shopping cart.**



1 Body Spray Bullnose

Part #: 004-66-5540

Qty: 1



2 Mascara Bullnose

Part #: 004-66-5541

Qty: 1



3 Flawless Glow Foundation Bullnose

Part #: 004-66-5542

Qty: 1



4 Primers and Spray Bullnose

Part #: 004-66-5543

Qty: 1



5 Lip Oil and Lipstick Bullnose

Part #: 004-66-5544

Qty: 1



6 Lip Lights and Tints Bullnose

Part #: 004-66-5545

Qty: 1

Questions regarding this project should be directed to: myHelp > Signs, Fixtures, Supplies > ISM

Please include: ■ Name of Project and Set Date ■ Part Numbers in question ■ Photo (if applicable)

Missing part of this instruction sheet? To view it electronically, visit:

Workbench > Quick Links > Tools > Instruction Sheets

000000000

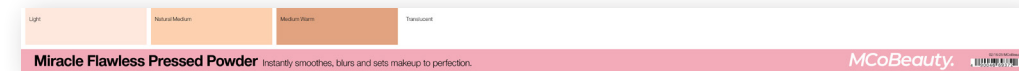
**Prior to assembly, review all pieces and determine if any are missing in your kit.
Order any missing or damaged pieces through Go Cart shopping cart.**



7 Brow Bullnose

Part #: 004-66-9371

Qty: 1



8 Setting Powder Bullnose

Part #: 004-66-9372

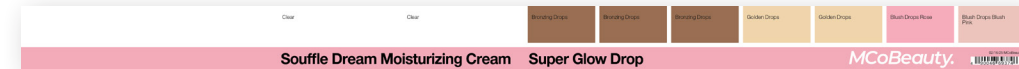
Qty: 1



9 Foundation Highlighter Bullnose

Part #: 004-66-9373

Qty: 1



10 Souffle Drops Bullnose

Part #: 004-66-9374

Qty: 1



11 Jelly Cheek Lip Mask Bullnose

Part #: 004-66-9375

Qty: 1



12 Ph Blush Cream Sticks Bullnose

Part #: 004-66-9376

Qty: 1

Questions regarding this project should be directed to: myHelp > Signs, Fixtures, Supplies > ISM

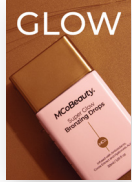
Please include: ■ Name of Project and Set Date ■ Part Numbers in question ■ Photo (if applicable)

Missing part of this instruction sheet? To view it electronically, visit:

Workbench > Quick Links > Tools > Instruction Sheets

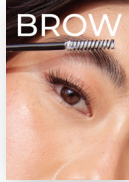
000000000

**Prior to assembly, review all pieces and determine if any are missing in your kit.
Order any missing or damaged pieces through Go Cart shopping cart.**



13 4x6 Glow Space Saver

Part #: 004-66-9377
Qty: 1



14 4x6 Lash/Brow Space Saver

Part #: 004-66-9378
Qty: 1



15 6x12 Body Cubby

Part #: 004-66-9379
Qty: 1



16 6x12 Face Cubby

Part #: 004-66-9380
Qty: 1



17 6x12 Lip/Cheek Cubby

Part #: 004-66-9381
Qty: 1



18 6x12 Lash Cubby

Part #: 004-66-9382
Qty: 1



19 6x12 Lip Cubby

Part #: 004-66-9383
Qty: 1



20 5.72x5.72 Skin Space Saver

Part #: 004-66-9378
Qty: 1

Questions regarding this project should be directed to: myHelp > Signs, Fixtures, Supplies > ISM

Please include: ■ Name of Project and Set Date ■ Part Numbers in question ■ Photo (if applicable)

Missing part of this instruction sheet? To view it electronically, visit:

Workbench > Quick Links > Tools > Instruction Sheets

000000000

D52 | Beauty | MCoBeauty BFF

Page 5 of 6

Step 1: Secure all cubbies and sign holders.

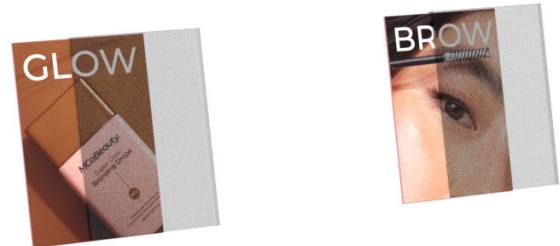
Step 2: Place 6x12 Body Cubby IST (004-66-9379) into 6x12 BFF sign holder (004-48-2964). Repeat steps for 6x12 Face (004-66-9380), 6x12 Lip/Cheek (004-66-9381), 6x12 Lash (004-66-9382) and 6x12 Lip (004-66-9383).



Step 3: Place Skin Space Saver (004-66-9385) into 6x6 BFF sign holder (004-48-4758).



Step 4: Place Glow Space Saver (004-66-9377) into 4x6 BFF sign holder (004-48-2697). Repeat for Lash Space Saver (004-66-9378).



Questions regarding this project should be directed to: myHelp > Signs, Fixtures, Supplies > ISM

Please include: ■ Name of Project and Set Date ■ Part Numbers in question ■ Photo (if applicable)

Missing part of this instruction sheet? To view it electronically, visit:

Workbench > Quick Links > Tools > Instruction Sheets

000000000

Step 5: Set signs, bullhoses and product on POG as shown.



Questions regarding this project should be directed to: myHelp > Signs, Fixtures, Supplies > ISM

Please include: ■ Name of Project and Set Date ■ Part Numbers in question ■ Photo (if applicable)

Missing part of this instruction sheet? To view it electronically, visit:

Workbench > Quick Links > Tools > Instruction Sheets

000000000